



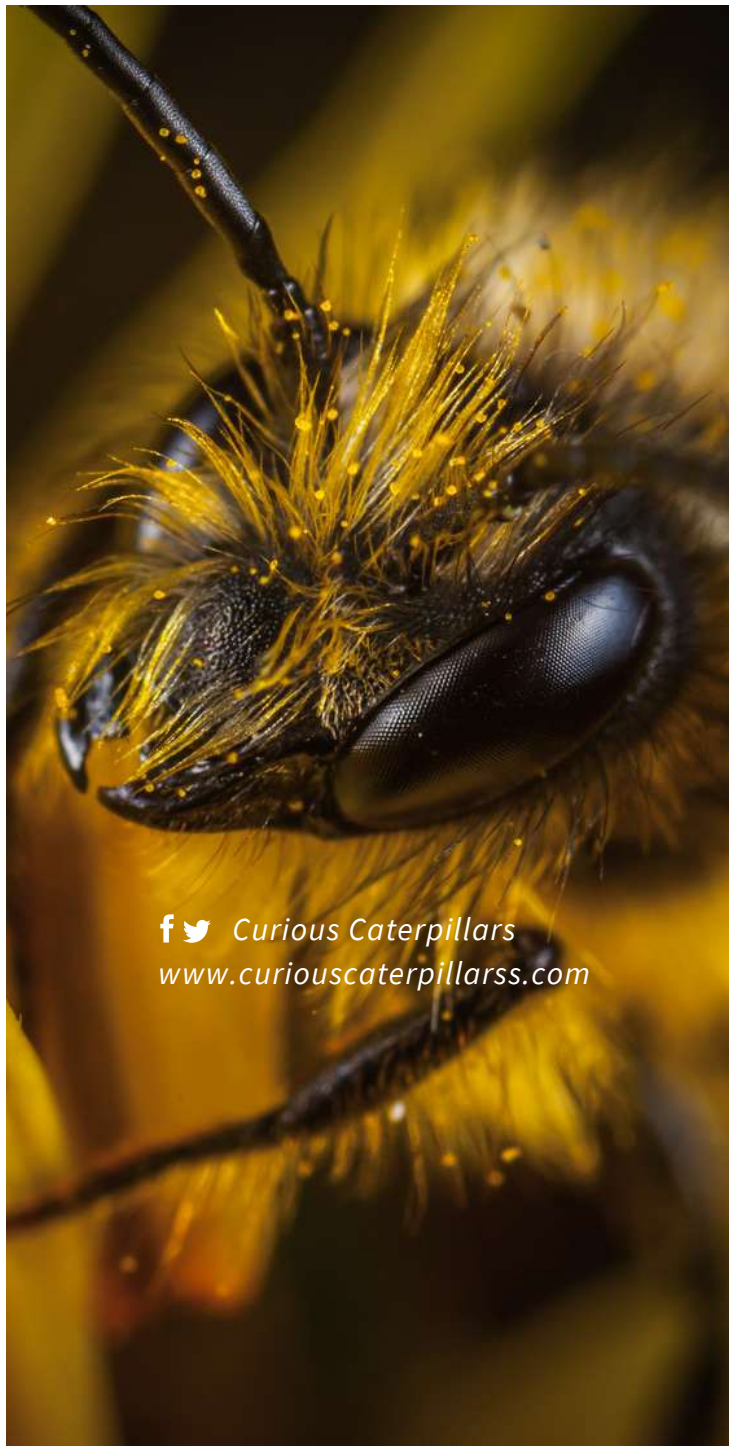


Curious Caterpillars  
www.curiouscaterpillarss.com

STEM

BEE'S VISION

UNIT



  Curious Caterpillars
www.curiouscaterpillarss.com

**BEEES HAVE TWO
COMPOUND EYES.
MEANING EACH
COMPOUND EYE IS
MADE OF HUNDREDS OF
SINGLE, SMALLER EYES.**

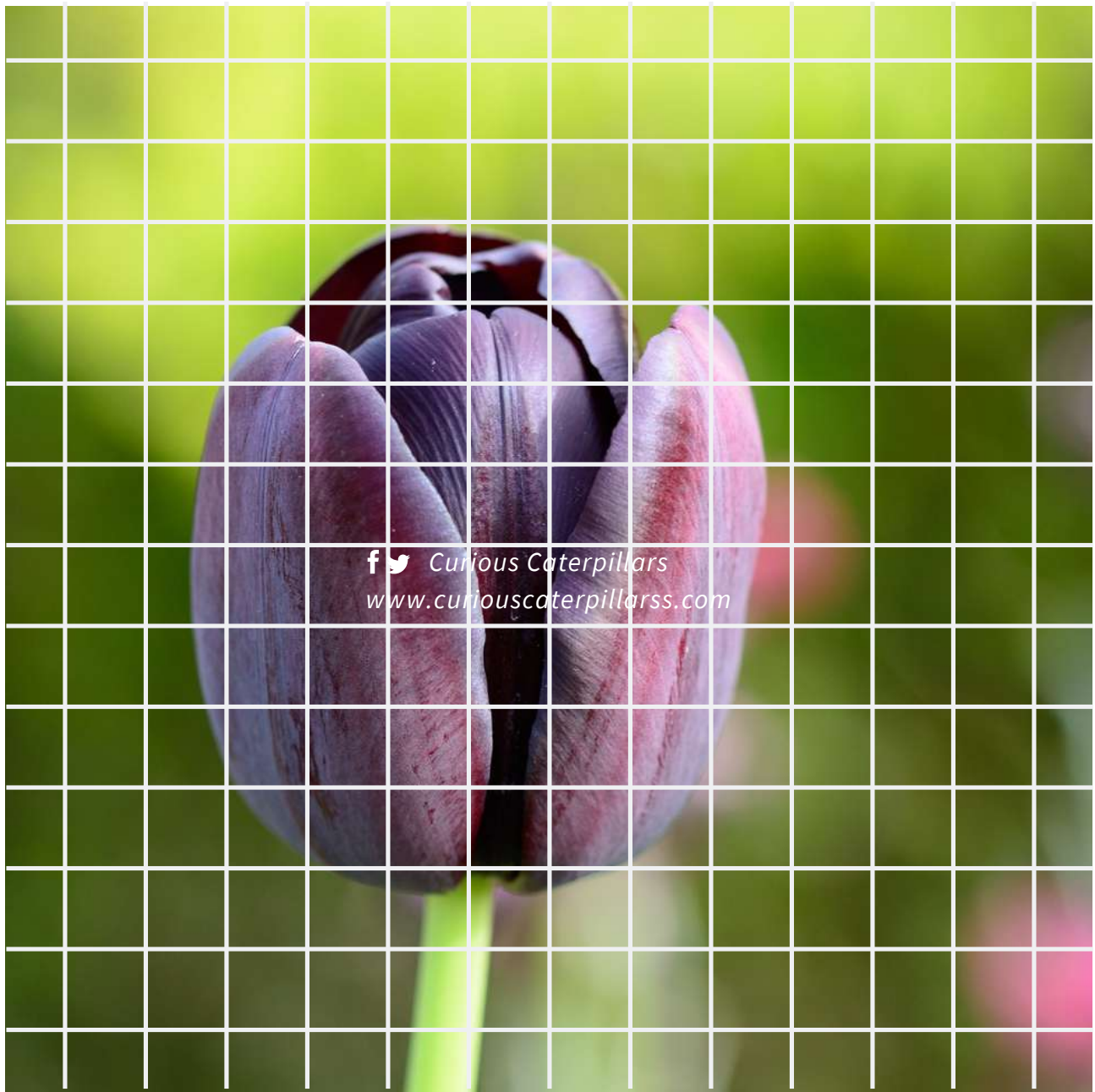
Curious Caterpillars  
www.curiouscaterpillarss.com

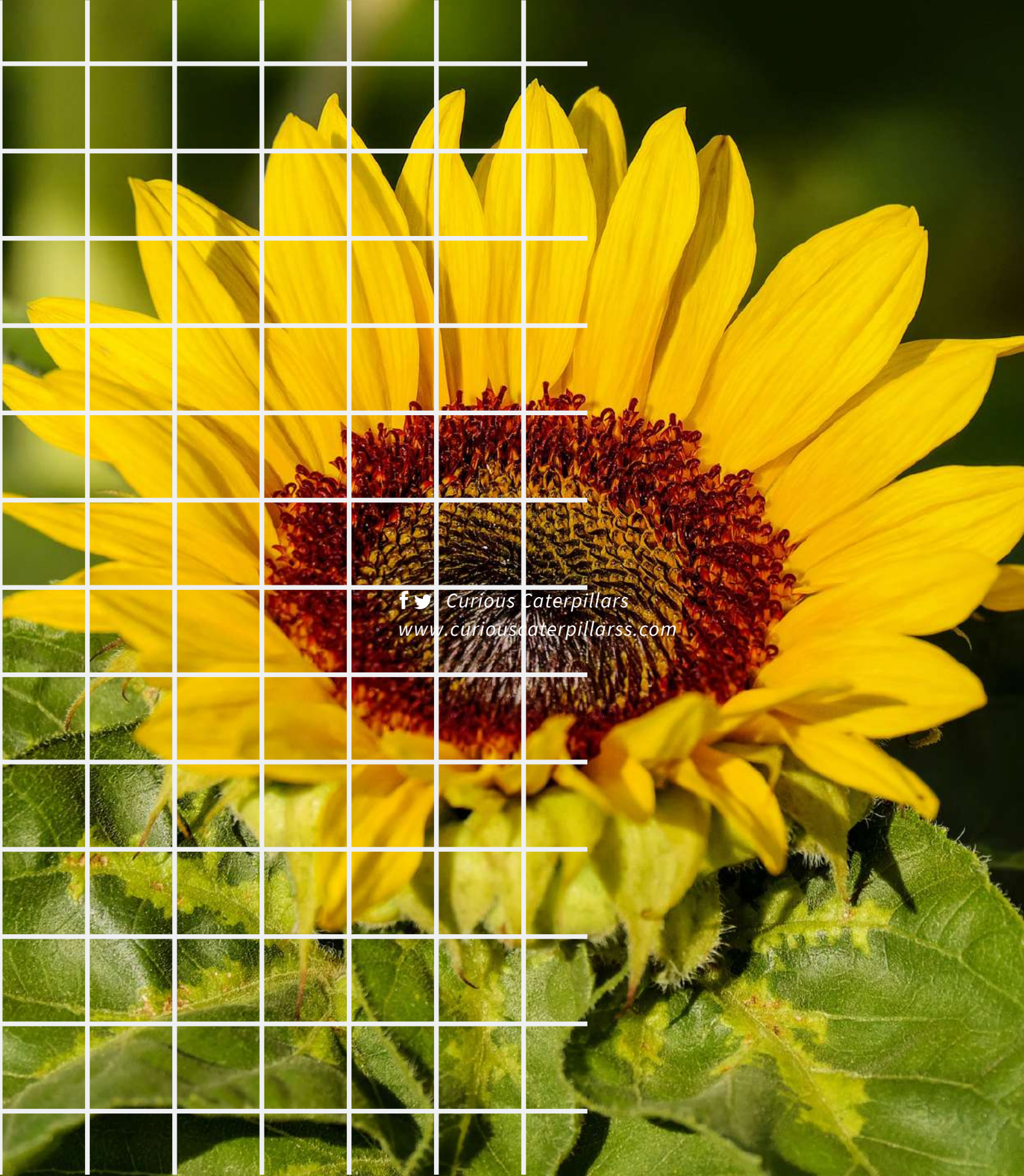
**IMAGINE, HAVING THEM
AND LOOKING
THROUGH THEM! IT
WOULD BE LIKE
DIVIDING THE PICTURE
INTO SMALLER PARTS
AND ZOOMING EACH OF
THOSE SMALLER
IMAGES.**



BEE VISION

**THIS IS HOW A BEE SEES. EACH
IMAGE IS LIKE A MOSIAC MADE
OF SMALLER MAGNIFIED
PICTURES.**





f t Curious Caterpillars
www.curiouscaterpillarss.com

BEE'S
VISION

Vs

YOUR
VISION

f t Curious Caterpillars
www.curiouscaterpillarss.com

STEM CHALLENGE

*Design compound eyes
using materials available
in your:*

- **Pantry**
- **Stationary cabinet**

Materials Required:

- **Glue**
- **Print of Bee's Eyes**

STEM Challenge Template

*Level: **K, K1, K2***

*Diffulty: **3***



Parent Preparation & Guidance

Guide your ward to look for small material that could make single eyes.

Curious Caterpillars  
www.curiouscaterpillarss.com

Pulses, cheerios from your pantry and beads, small circle stickers from your stationary cabinet could be good options.

Bee's Eyes STEM Challenge



Curious Caterpillars  
www.curiouscaterpillarss.com