

<https://kidpillar.com>



**WHAT DID THE GARDENER DO WHEN
ALL THE PLANTS IN HIS FARM
WILTED?**



**HE THREW IN THE
TROWEL!**

<https://kidpillar.com>



**WHY DOES THE LETTER A LIKE
FLOWERS?**



**BECAUSE A 'B' COMES
AFTER IT.**

<https://kidpillar.com>



**WHAT DID THE TREE SAY TO
SPRING?**



WHAT A RE-LEAF!

<https://kidpillar.com>



**WHAT DID SUMMER SAY
TO SPRING?**



**"HELP - I'M ABOUT TO
FALL!"**

<https://kidpillar.com>



DOES FEBRUARY MARCH?



NO, BUT APRIL MAY!

<https://kidpillar.com>



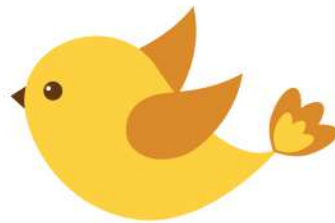
**WHAT'S THE DIFFERENCE BETWEEN
SPRING ROLLS AND SUMMER ROLLS?**



SEASONING!



SPRING JOKES



<https://kidpillar.com>



**WHAT MONTH IS ALWAYS POLITE
AND ASKS QUESTIONS?**



MAY!

<https://kidpillar.com>



**WHAT KIND OF TREE HAS
HANDS?**



A PALM TREE.

<https://kidpillar.com>



**WHAT DO A LION AND SPRING HAVE
IN COMMON?**



**THEY BOTH SPRING
FORWARD.**

<https://kidpillar.com>



**WHAT DID THE GARDENER DO WHEN
ALL THE PLANTS IN HIS FARM
WILTED?**



**HE THREW IN THE
TROWEL!**

<https://kidpillar.com>



**HOW DO PIGS RELAX IN
SPRINGTIME?**



IN A HAM-MOCK!

<https://kidpillar.com>



**HOW DO BEES BRUSH
THEIR HAIR?**



WITH HONEYCOMBS!

<https://kidpillar.com>



**WHY DO FARMERS BURY THEIR
MONEY IN THE SOIL?**



**TO MAKE THE SOIL
RICH!**

<https://kidpillar.com>



**WHAT DID THE DUCK WEAR TO THE
SPRING WEDDING?**



**A DUCKS-EDO!
PAR-SNIPS!**

<https://kidpillar.com>



**WHY DOES THE LETTER A LIKE
FLOWERS?**



**BECAUSE A 'B' COMES
AFTER IT.**

<https://kidpillar.com>



**WHICH FLOWER DID THE BOY GIVE
HIS MOM ON HER BIRTHDAY?**



A SON-FLOWER!

<https://kidpillar.com>



**DID YOU MEET THAT MUSHROOM
OVER THERE, I HEAR HE'S THE LIFE
OF THE PARTY?**



HE'S A PRETTY FUN-GI!

<https://kidpillar.com>



**WHAT DOES AN ELEPHANT USE TO
PACK FOR SPRING BREAK?**



A TRUNK.

<https://kidpillar.com>



**WHY DO BASKETBALL PLAYERS STAY
PUT DURING SPRING BREAK?**



**THEY FEAR THEY MAY
GET CALLED OUT FOR
TRAVELING!**

<https://kidpillar.com>



**WHAT DID THE TREE SAY TO
SPRING?**



WHAT A RE-LEAF!

<https://kidpillar.com>



**WHAT DO YOU CALL A BEAR CAUGHT
IN A SPRING SHOWER?**



A DRIZZLY BEAR!

<https://kidpillar.com>



**WHAT DID SUMMER SAY
TO SPRING?**



**"HELP - I'M ABOUT TO
FALL!"**

<https://kidpillar.com>



**WHICH IS THE SHORTEST MONTH OF
SPRING?**



**MAY - BECAUSE IT
ONLY HAS THREE
LETTERS!**

<https://kidpillar.com>



**WHY DO DOCTORS HATE POPULAR
INSTAGRAM ACCOUNTS THAT ONLY
POST IN THE SPRING?**



**BECAUSE THEY'RE
SEASONAL INFLUENCERS!**

<https://kidpillar.com>



**WHAT DID THE WALL CLOCK DO
AFTER IT WAS ADJUSTED FOR
DAYLIGHT SAVING TIME?**



**NOTHING, IT JUST
HUNG AROUND.**

<https://kidpillar.com>



DOES FEBRUARY MARCH?



NO, BUT APRIL MAY!

<https://kidpillar.com>



**WHAT MONSTER PLAYS THE MOST
APRIL FOOL'S JOKES?**



PRANKENSTEIN!

<https://kidpillar.com>



**WHY IS EVERYONE SO TIRED ON
APRIL 1ST?**



**BECAUSE THEY JUST
FINISHED A 31-DAY
LONG MARCH.**

<https://kidpillar.com>



**WHY DID THE WORM CROSS THE
RULER?**



**TO BECOME AN
INCH-WORM!**

<https://kidpillar.com>



**WHAT MAKES SOME PLANTS BETTER
AT MATH THAN OTHERS?**



SQUARE ROOTS!

<https://kidpillar.com>



**WHAT'S THE DIFFERENCE BETWEEN
SPRING ROLLS AND SUMMER ROLLS?**



SEASONING!

<https://kidpillar.com>



**WHY DID THE FARMER PUT OUT A
GIRAFFE, MONKEY AND AN
ELEPHANT IN HIS FARM?**



**BECAUSE HE WANTED
TO GROW ZOO-CCHINI!**

<https://kidpillar.com>



**WHAT DOES WINTER FAT
TURN INTO?**



SPRING ROLLS.

<https://kidpillar.com>



WHERE DO FLOWERS GO WHEN THEY GET POLLINATED TOO EARLY IN THE SPRING?



PLANT PARENTHOOD.

<https://kidpillar.com>



WHAT KIND OF GARDEN DOES A BAKER HAVE?



A "FLOUR" GARDEN.

<https://kidpillar.com>



WHAT IS THE DIFFERENCE BETWEEN THANKSGIVING DAY AND APRIL FOOL'S DAY?



ON ONE YOU ARE THANKFUL AND ON THE OTHER, YOU ARE PRANKFUL!

<https://kidpillar.com>



WHAT MONTH IS ALWAYS POLITE AND ASKS QUESTIONS?



MAY!

<https://kidpillar.com>



HOW CAN YOU TELL IT'S A DOGWOOD TREE?



BY THE BARK.

<https://kidpillar.com>



WHAT KIND OF TREE HAS HANDS?



A PALM TREE.

<https://kidpillar.com>



WHAT DO YOU CALL IT WHEN WORMS TAKE OVER THE WORLD?



GLOBAL WORMING!

<https://kidpillar.com>



KNOCK, KNOCK! WHO'S THERE? IT'S SWARM! SWARM WHO?



SWARM OUTSIDE!

<https://kidpillar.com>



WHAT FALLS BUT NEVER GETS HURT?



THE RAIN!

<https://kidpillar.com>



WHAT KIND OF POLE YOU CANNOT CLIMB?



A TADPOLE!

<https://kidpillar.com>



WHO SAID TIME TRAVEL WAS IMPOSSIBLE?



EVERY SPRING, I GO AHEAD AN HOUR.

<https://kidpillar.com>



WHAT DO A LION AND SPRING HAVE IN COMMON?



THEY BOTH SPRING FORWARD.