



<https://kidpillar.com>



**I AM AN ELEMENT AND HAVE  
A MARVEL CHARACTER  
NAMED AFTER ME.  
WHO AM I?**

ANSWER: IRON!



<https://kidpillar.com>



**WHAT DID THE SCIENTIST  
SAY WHEN HE FOUND 2 ATOMS  
OF HELIUM?**

ANSWER: HEHE



<https://kidpillar.com>



**HOW DO WE KNOW THAT SATURN  
WAS MARRIED MORE THAN  
ONCE?**

ANSWER: IT HAS A LOT OF RINGS!



<https://kidpillar.com>



**WHICH PLANET HAS THE  
SHORTEST YEAR?**

ANSWER: MERCURY WITH 88 EARTH  
DAYS!



<https://kidpillar.com>



**WHICH PLANET HAS THE  
LONGEST YEAR?**

ANSWER: NEPTUNE WITH 165 EARTH  
YEARS!



<https://kidpillar.com>

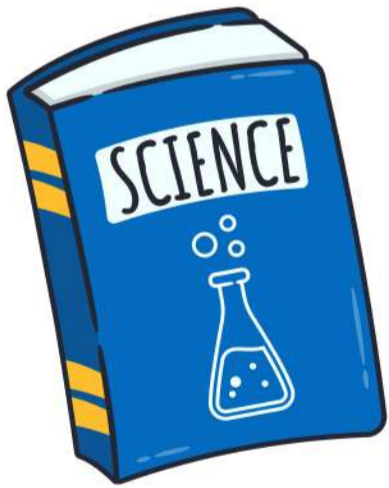


**WHAT FREEZES AFTER IT IS  
HEATED UP?**

ANSWER: A COMPUTER.



# Science Riddles



<https://kidpillar.com>



**WHY IS AN ATOM NEVER LATE?**

ANSWER: IT ALWAYS HAS A  
NUCLEAR CLOCK!



<https://kidpillar.com>



**WHAT'S AN ASTRONAUT'S  
FAVORITE KEY ON THE  
KEYBOARD?**

ANSWER: THE SPACEBAR!



<https://kidpillar.com>



**I AM A ROMAN GOD, A PLANET  
AND CAN MEASURE HEAT.  
WHO AM I?**

ANSWER: MERCURY





<https://kidpillar.com>



**I AM AN ELEMENT AND HAVE  
A MARVEL CHARACTER  
NAMED AFTER ME.  
WHO AM I?**

ANSWER: IRON!



<https://kidpillar.com>



**WHICH IS THE LAZIEST  
MOUNTAIN IN THE WORLD?**

ANSWER: MT. EVEREST!



<https://kidpillar.com>



**I WEAR MANY RINGS BUT HAVE  
NO FINGERS. WHO AM I?**

ANSWER: SATURN!



<https://kidpillar.com>



**WHY DID THE COMPUTER GO  
TO THE DOCTOR?**

ANSWER: BECAUSE IT HAD A VIRUS!



<https://kidpillar.com>



**WHAT IS AT THE CENTER OF  
GRAVITY**

ANSWER: THE LETTER 'V'!



<https://kidpillar.com>



**WHAT DID THE SCIENTIST  
SAY WHEN HE FOUND 2 ATOMS  
OF HELIUM?**

ANSWER: HEHE!



<https://kidpillar.com>



**WHAT KIND OF CHEMICAL  
ELEMENT HATES TO BE A  
FOLLOWER?**

ANSWER: LEAD!



<https://kidpillar.com>



**I AM FULL OF HOLES BUT CAN  
STILL HOLD WATER. WHAT AM I?**

ANSWER: A SPONGE!



<https://kidpillar.com>



**WHAT DO YOU GET WHEN  
YOU CROSS A DENTIST AND  
A COMPUTER?**

ANSWER: A BYTE!



<https://kidpillar.com>



**HOW DO WE KNOW THAT SATURN  
WAS MARRIED MORE THAN  
ONCE?**

ANSWER: IT HAS A LOT OF RINGS!



<https://kidpillar.com>



**WHAT DO YOU CALL A MONSTER  
WITH A HIGH IQ?**

ANSWER: FRANK-EINSTEIN!



<https://kidpillar.com>



**WHAT EXPANDS ON COOLING?**

ANSWER: WATER!





<https://kidpillar.com>



**WHAT HAS A MOUTH BUT  
CANNOT CHEW?**

ANSWER: A RIVER!



<https://kidpillar.com>



**WHICH ELEMENT IS DERIVED  
FROM A NORSE GOD?**

ANSWER: THORIUM!



<https://kidpillar.com>



**I AM A BALL THAT CAN BE  
ROLLED, BUT NEVER BOUNCED  
OR THROWN! WHAT AM I ?**

ANSWER : EYEBALL



<https://kidpillar.com>



**I'M EXCELLENT TO TASTE  
BUT HORRIBLE TO SMELL.  
WHAT AM I?**

ANSWER: A TONGUE.



<https://kidpillar.com>



**WHICH PLANET HAS THE  
SHORTEST YEAR?**

ANSWER: MERCURY WITH 88 EARTH  
DAYS!



<https://kidpillar.com>



**WHICH PLANET HAS THE  
LONGEST YEAR?**

ANSWER: NEPTUNE WITH 165 EARTH  
YEARS!



<https://kidpillar.com>



**I CAN BURN YOUR MOUTH AND  
STING YOUR EYE, BUT I AM  
CONSUMED EVERY DAY.  
WHAT AM I?**

ANSWER: SALT.



<https://kidpillar.com>



**I CAN KEEP A SWIMMING POOL  
CLEAN, BUT I CAN ALSO POISON  
YOU. WHAT AM I?**

ANSWER: CHLORINE!



<https://kidpillar.com>



**I AM UNDER YOUR FACE AND  
OUTSIDE YOUR MIND.  
WHAT AM I?**

ANSWER: YOUR SKULL



<https://kidpillar.com>



**I CAN BE GOOD, BUT I CAN BE  
BAD. YOU'LL FIND ME WHEREVER  
YOU GO. WHAT AM I?**

ANSWER: BACTERIA.



<https://kidpillar.com>



**I AM THE EQUIVALENT OF A  
ONE-WAY STREET IN THE  
UNIVERSE. WHAT AM I?**

ANSWER: A BLACK HOLE.



<https://kidpillar.com>



**WHAT FREEZES AFTER IT IS  
HEATED UP?**

ANSWER: A COMPUTER.





<https://kidpillar.com>



**WHO IS FASTER - HOT OR COLD?**

ANSWER: HOT, BECAUSE YOU CAN  
CATCH COLD!



<https://kidpillar.com>



**WHY IS AN ATOM NEVER LATE?**

ANSWER: IT ALWAYS HAS A  
NUCLEAR CLOCK!



<https://kidpillar.com>



**WHAT TWO PERIODIC ELEMENTS,  
WHEN COMBINED, HEAL?**

ANSWER: HELIUM AND ALUMINIUM  
(HE+AL)



<https://kidpillar.com>



**I MAKE UP ALMOST 70% OF  
THE UNIVERSE, BUT NO ONE  
KNOWS ANYTHING ABOUT ME.  
WHAT AM I?**

ANSWER: DARK ENERGY



<https://kidpillar.com>



**WHAT'S AN ASTRONAUT'S  
FAVORITE KEY ON THE  
KEYBOARD?**

ANSWER: THE SPACEBAR!



<https://kidpillar.com>



**YOU MAY HEAR ME, BUT  
CANNOT SEE ME! I DON'T SPEAK  
UNLESS SPOKEN TO. WHO AM I?**

ANSWER: ECHO!



<https://kidpillar.com>



**I AM A ROMAN GOD, A PLANET  
AND CAN MEASURE HEAT.  
WHO AM I?**

ANSWER: MERCURY



<https://kidpillar.com>



**I CAN EAT A LOT OF IRON  
WITHOUT EVER GETTING SICK.  
WHAT AM I?**

ANSWER: RUST!



<https://kidpillar.com>



**WHAT IS SOMETHING WITH A LID,  
BUT IS NOT A COFFEE MUG.  
IT HAS A SOCKET BUT DOES NOT  
HAVE A PLUG.**

ANSWER: EYE

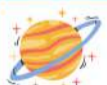


<https://kidpillar.com>



**VOICELESS IT CRIES, WINGLESS  
IT FLUTTERS! TOOTHLESS IT  
BITES, MOUTHLESS MUTTERS!  
WHAT IS IT?**

ANSWER: MIND!



<https://kidpillar.com>



**I AM GROWING LARGER WITH  
EVERY SECOND, GROWING  
FASTER AND FASTER. BUT STILL  
OVER 70% OF ME IS EMPTY.  
WHAT AM I?**

ANSWER: THE UNIVERSE



<https://kidpillar.com>



**BORN IN THE OCEAN AND WHITE  
AS SNOW. WHEN I FALL BACK TO  
WATER I DISAPPEAR WITHOUT A  
TRACE. WHAT AM I?**

ANSWER: SALT!

